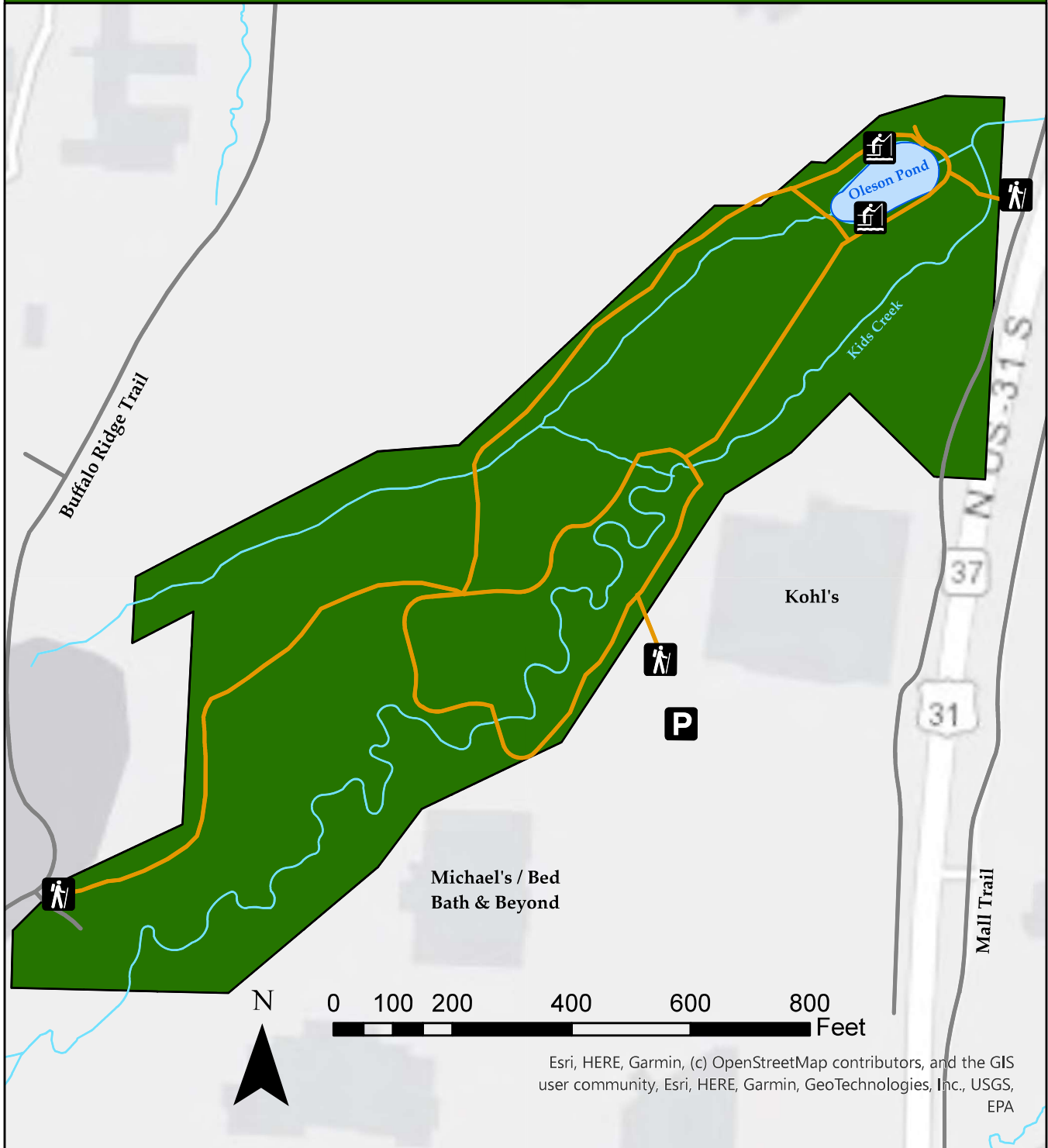





Kids Creek Park



Esri, HERE, Garmin, (c) OpenStreetMap contributors, and the GIS user community, Esri, HERE, Garmin, GeoTechnologies, Inc., USGS, EPA

Park Features

-  Fishing
-  Hiking
-  Parking

For more information about Township parks, or to report any concerns, please email: parks@garfield-twp.com



Charter Township of Garfield
3848 Veterans Drive
Traverse City, MI 49684
Phone: 231.941.1620
Fax: 231.941.1588
www.garfield-twp.com

Kids Creek Park

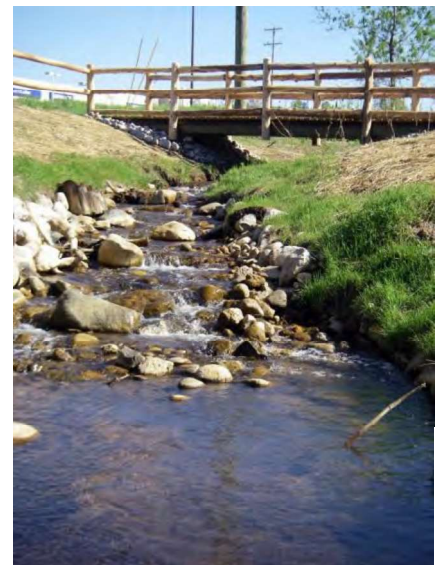


Park Description

Nestled between Great Wolf Lodge and Kohl's, this park is a hidden gem along US 31. The 3/4 mile trail network includes wooden bridges and boardwalks following Kids Creek. Development of this park into a passive recreation resource is an ongoing process. Kids Creek Park makes for a great walk after some shopping at the nearby businesses!

Dedicated to Garfield Township during the development of the Great Wolf Lodge, this 20-acre park has seen extensive volunteer effort to restore the stream banks of Kids Creek, which meanders through the park.

Kids Creek Park is accessed via the parking lot between Kohl's and Bed Bath & Beyond (look for the "Exit" sign), or from the non-motorized trailhead along the US-31 bike path, which is a great spot to pull off from the path, park your bike, and take a walk around the stream! Public restrooms at the site are not available.



Park Information

Location:	N. US 31 South
Acreege:	21 acres
Hunting:	Not allowed